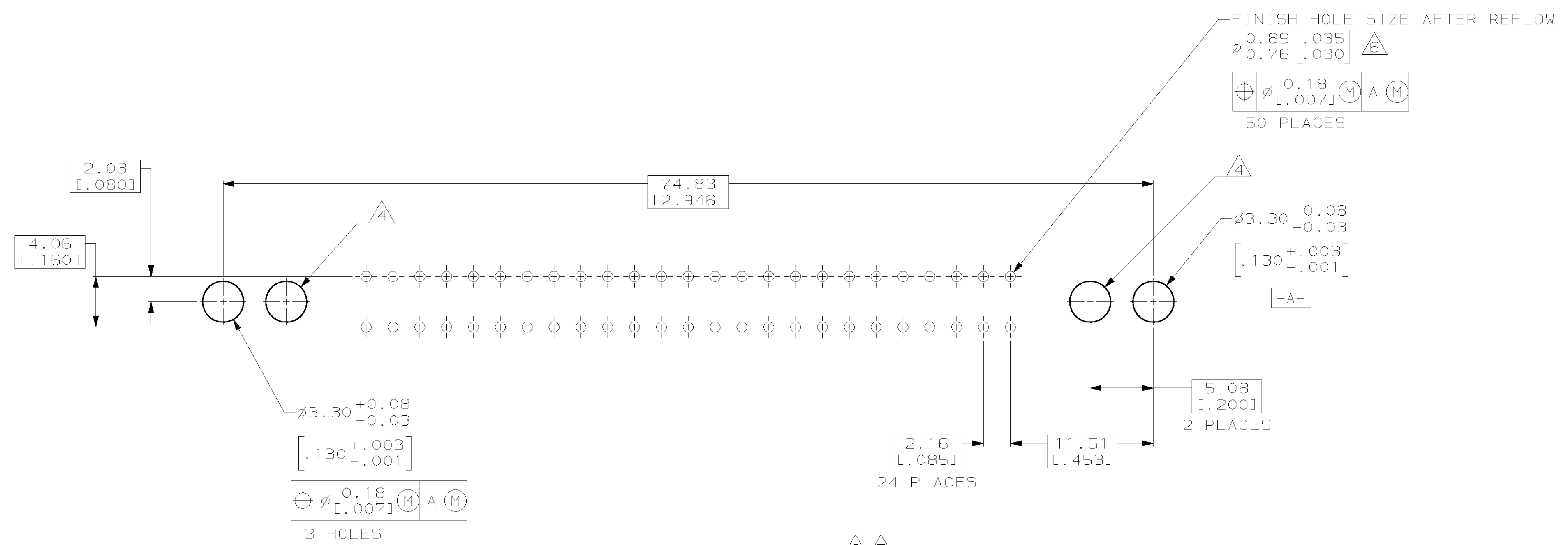
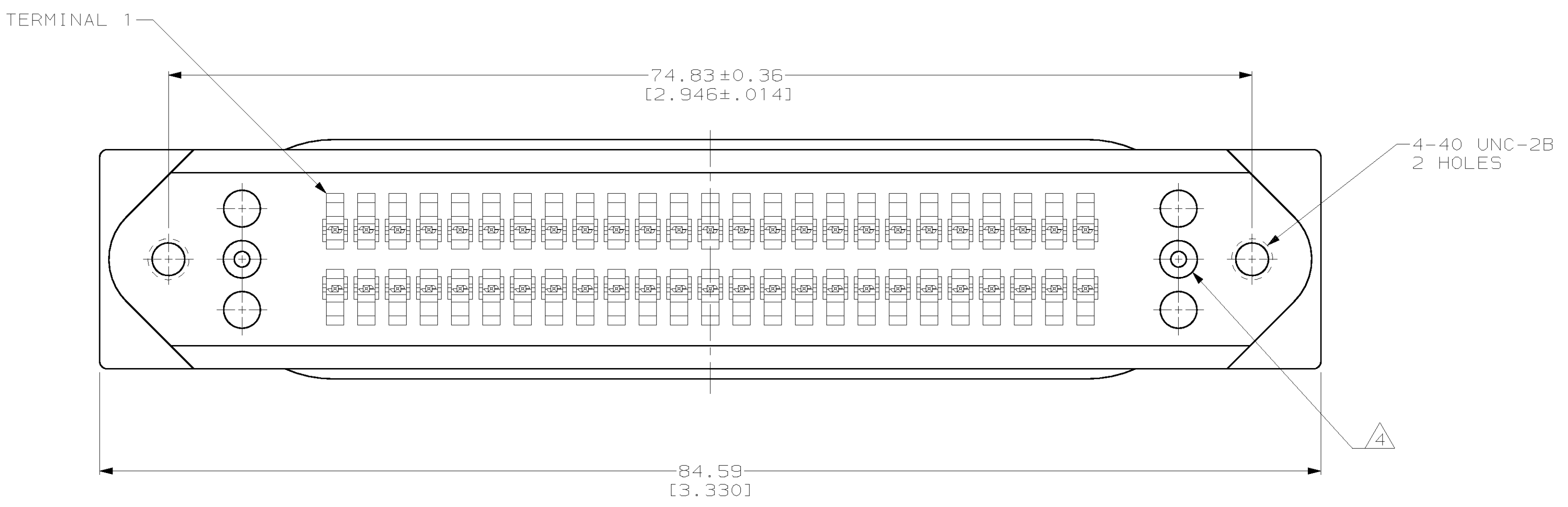
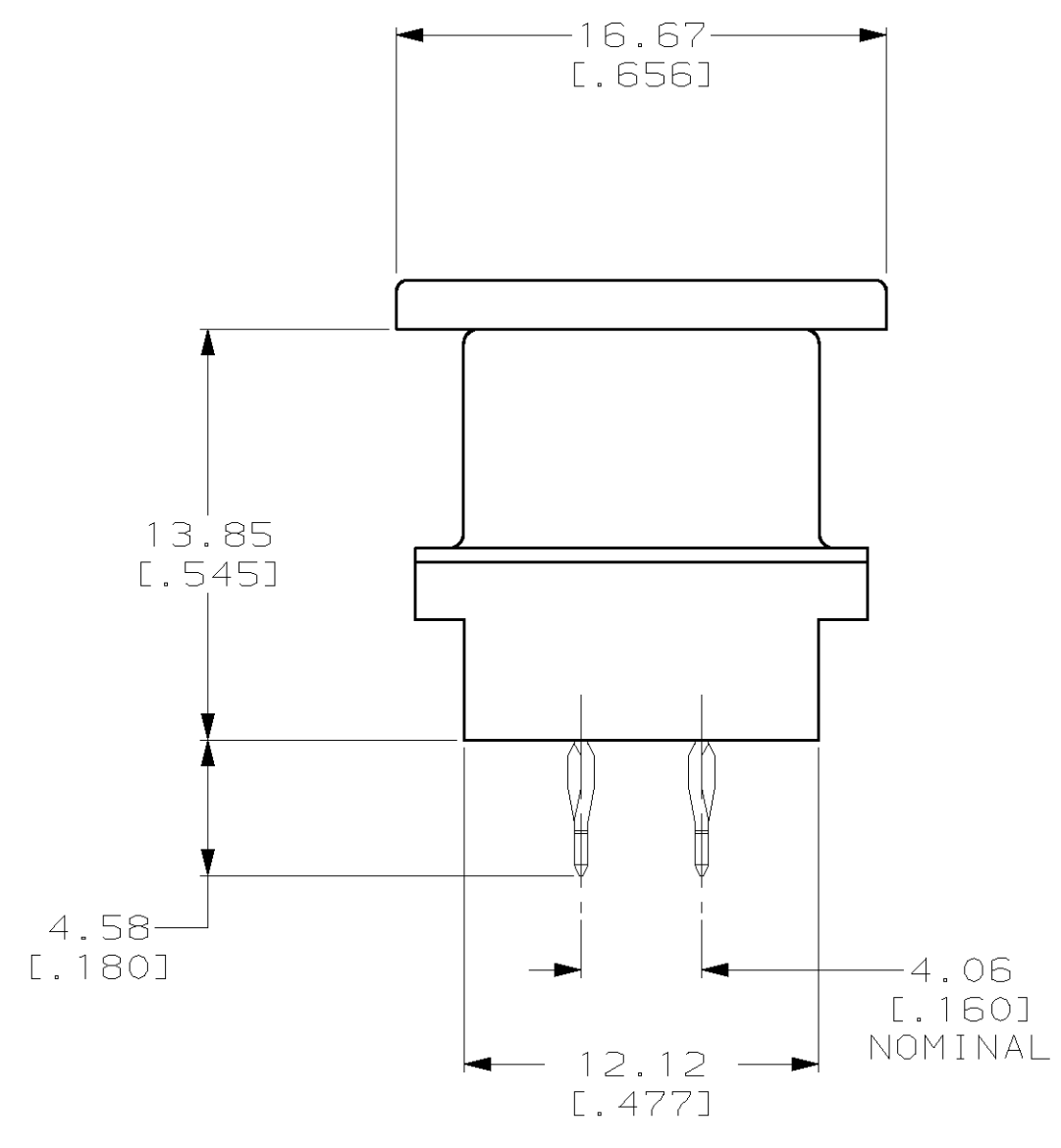
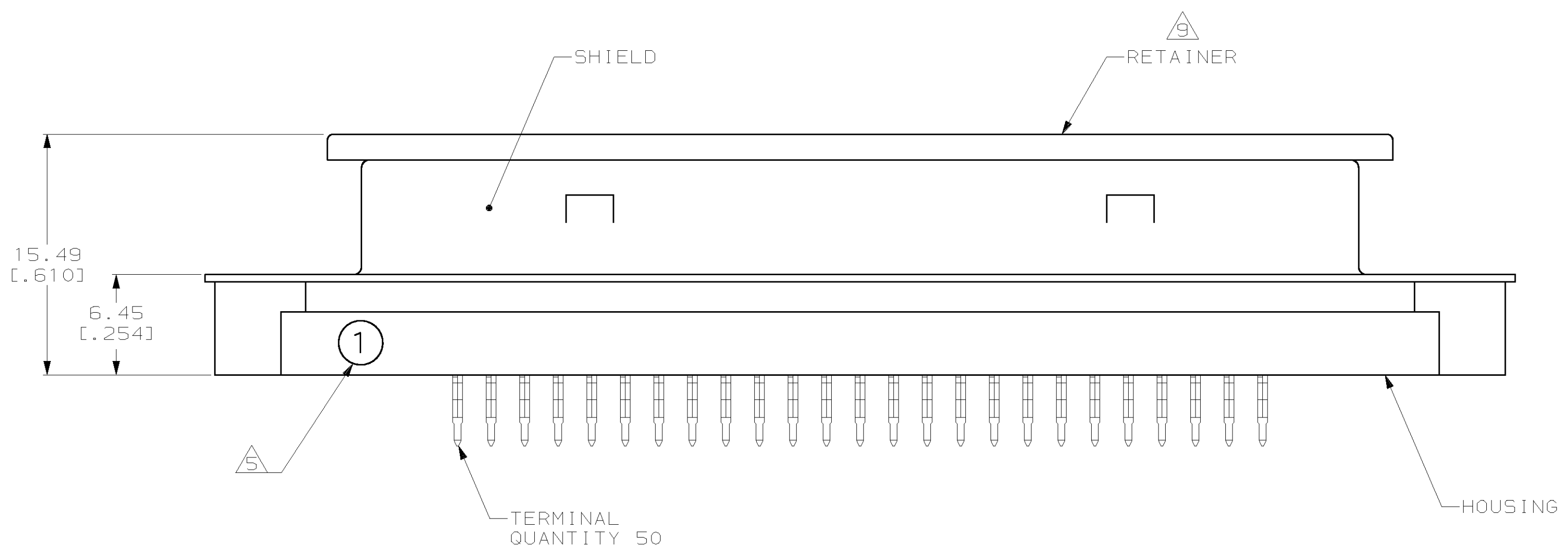


LOC	DIST	REV	DESCRIPTION	DATE	OWN	APPRO
AA	20					
		D	ADDED: -2 PER EC 0515-0073-01	28SEP01	DLD	DMW



- 1. DIMENSIONS ARE MAXIMUM UNLESS OTHERWISE SPECIFIED.
- 2. MATERIAL: HOUSING - POLYESTER, BLACK.
 TERMINAL - COPPER ALLOY PLATED WITH 0.76µm [0.00030] MINIMUM GOLD ON MATING SURFACE AND:
 557984-1 - 0.13µm [0.00005] MINIMUM GOLD ON ACTION PIN AREA
 557984-2 - 2.54µm [0.00100] MINIMUM TIN-LEAD ON ACTION PIN AREA
 OVER 1.27µm [0.00050] MINIMUM NICKEL UNDERPLATE OVER ENTIRE TERMINAL.
 RETAINER - POLYETHYLENE, NATURAL.
 SHIELD - CARBON STEEL, PLATED BRIGHT NICKEL 5.08µm [0.00200] MINIMUM.
- 3. THE CONTACT SURFACES OF THE TERMINALS ARE COATED WITH LUBRICANT.
- 4. OPTIONAL MOUNTING HOLE FOR SELF-TAPPING SCREW.
- 5. "1" ON HOUSING INDICATES LOCATION OF TERMINAL 1.
- 6. ALL PLATED-THRU HOLES SHALL BE PER AMP SPEC 115-6072.
- 7. 50 LBS. MINIMUM FORCE REQUIRED TO UNSEAT CONNECTOR FROM PRINTED CIRCUIT BOARD WITHOUT USE OF HARDWARE.
- 8. CENTER-TO-CENTER SPACING OF TERMINALS IS 2.16 [.085] NOMINAL.
- 9. RETAINER MUST REMAIN INSTALLED UNTIL AFTER CONNECTOR HAS BEEN INSERTED INTO PCB HOLES.

PRINTED CIRCUIT BOARD MOUNTING DIMENSIONS

TIN-LEAD	557984-2
GOLD	557984-1
ACTION PIN PLATING	PART NUMBER

THIS DRAWING IS A CONTROLLED DOCUMENT.		DWN	JOEL H. WOOTEN	4-13-93	TYCO Electronics	
		CHK	C. WHITT	4-22-93	Harrisburg, PA 17105-3608	
		APP'D	R. FLAHERTY	4-26-93	AMP	
DIMENSIONS: mm [INCHES]		TOLERANCES UNLESS OTHERWISE SPECIFIED:		NAME: RECEPTACLE ASSEMBLY, 50 POSITION, SHIELDED, ACTION PIN, CHAMP		
0 PLC ±		±		PRODUCT SPEC: 108-6019		
1 PLC ±		±		APPLICATION SPEC: 114-6027		
2 PLC ±		±		SIZE: A1		
3 PLC ±		±		CAGE CODE: 00779		
4 PLC ±		±		DRAWING NO: 557984		
ANGLES ±		±		RESTRICTED TO: -		
FINISH		FINISH		WEIGHT: -		
				CUSTOMER DRAWING		
				SCALE: 4:1		
				SHEET: 1 OF 1		
				REV: 0		